

MORRIS COUNTY COVID UPDATE 8.26.2020

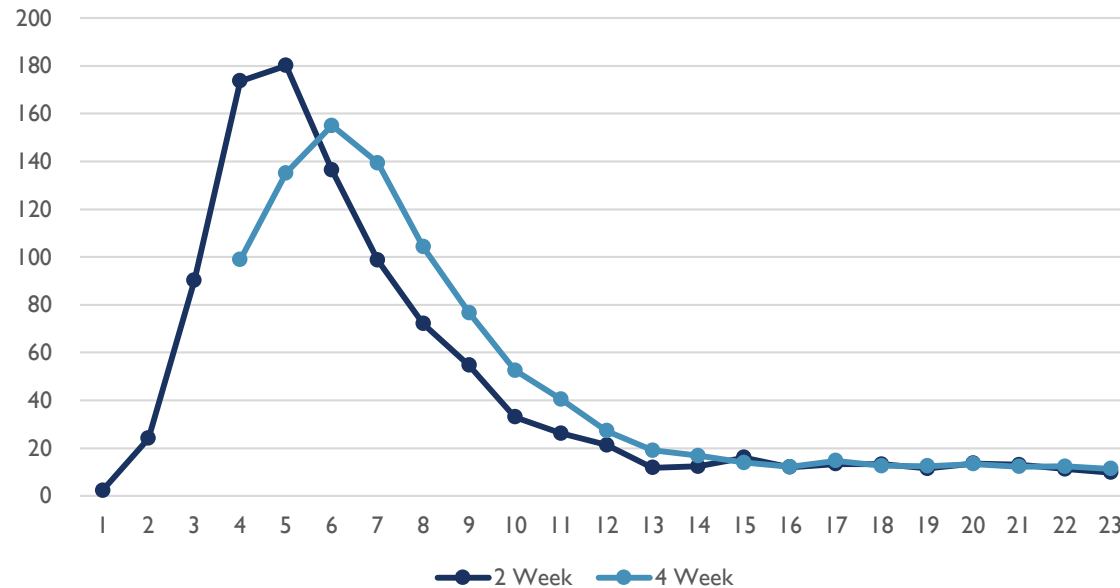
- MORRIS COUNTY COVID19 CURVE & LATEST STATISTICS
- RECENT NEWS- \$7 MILLION IN FEDERAL CARES FUNDING DISTRIBUTION
- COVID RESPONSE HIGHLIGHT- HOW MORRIS COUNTY COORDINATED CRISIS WITH KEY PARTNERS



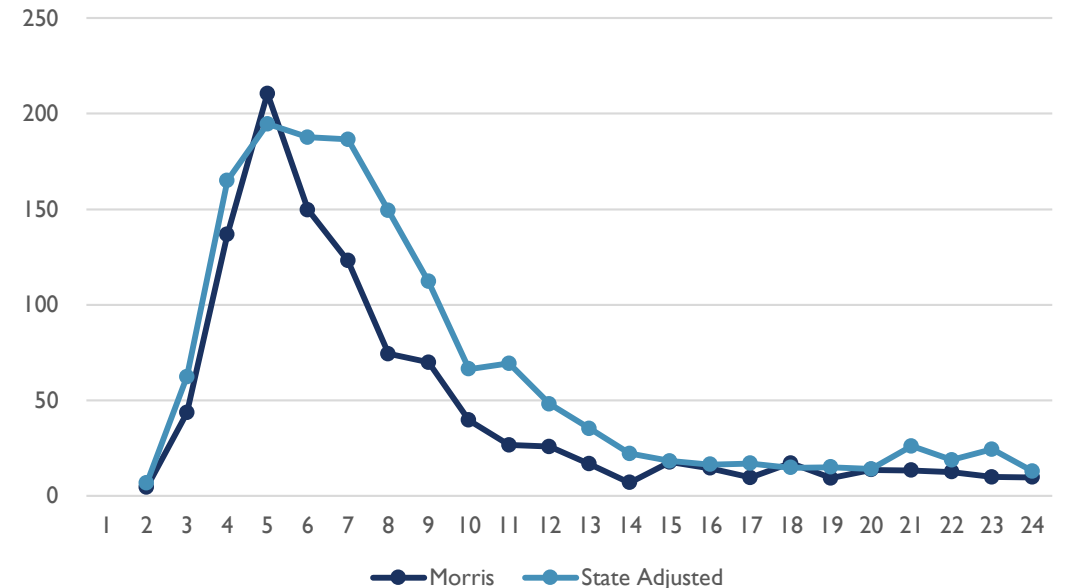
MORRIS COUNTY CURVE- BY WEEK, DAILY AVERAGE

FROM 210 AT HEIGHT, APRIL 13, TO CURRENT DAILY AVERAGE OF 10, A 95% REDUCTION

Morris Daily Covid Cases
2 and 4 week averages



By week- Daily Average
Morris vs State*



29% lower case rate vs state adjusting state

*Population to same scale as Morris (5.5% of state pop)

Sources- Morris County Health Department and New Jersey Department of Health

RECENT NEWS

\$7 MILLION IN FEDERAL CARES FUNDING ALLOCATED BY STATE

Reimbursement for Previous COVID-19 Expenses

\$3,819,380

- Setting up and staffing a COVID-19 Testing Site at CCM
- Procurement of PPE
- Additional Public Health Staff
- Hazard Pay for Direct Service Staff
- Overtime Costs relative to COVID-19 Costs
- Workers Compensation Costs for staff inflicted with the virus
- Additional Funding provided to Community Based Human Service Agencies

CRF Funding for COVID-19 Testing Until December 1, 2020

\$357,500

- This will represent the 25% match required by FEMA and equates to \$1.432M in testing capabilities until December 1, 2020.
- The COVID-19 testing to be procured will include:
 - In-Home Testing
 - Mobile Testing in various Municipalities
 - First Responder Testing
- (CRF: Coronavirus Relief Funding)

ELC Funding for Testing until June of 2021

\$2,915,033

- This will represent the 25% match required by FEMA and equates to \$11,660,132 in testing capabilities until June, 2021
- The COVID-19 Testing to be procured will include:
 - In-Home Testing
 - Mobile Testing in various Municipalities
 - First Responder Testing
- (ELC: Epidemiology and Laboratory Capacity Funding)

COVID RESPONSE HIGHLIGHT

MORRIS COUNTY HEALTH RESPONSE COORDINATION

- **Morris County Department of Law and Public Safety**
 - Establishment of the Daily COVID-19 Testing Center at County College of Morris
- **Morris County Division of Health Management:**
 - The hiring of 5 additional professional Health Staff
 - Redirection of all existing staff to focus on COVID-19
 - Activation of Morris County Medical Reserve Corps
 - Coordination with Local Health Departments
- **Morris County Office of Emergency Management**
 - Activated additional Morris County EMS Units to support local squads
 - Decontaminated Municipal Emergency Vehicles
 - Coordinated and established a warehouse of PPE to be provided to:
 - Local EMS/Police/fire/Health Departments
 - Long Term Care Facilities
 - Area Hospitals
 - Established Medical tent systems at Morris County Hospitals and Zufall Center in Dover
- **Morris County Sheriff's Office**
 - Daily Staffing of CCM COVID-19 Testing Center
 - Daily delivery and distribution of all PPE to local units, Health Care and Human Service Residential Facilities,
 - Initiated efforts to Control of the spread of the virus in the Correctional Facility.
 - Provided staffing at the Youth Shelter when all counselors became infected with the COVID-19 virus